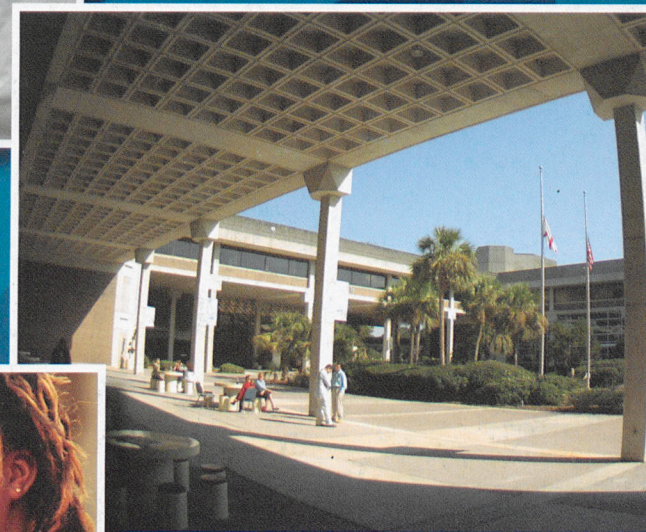
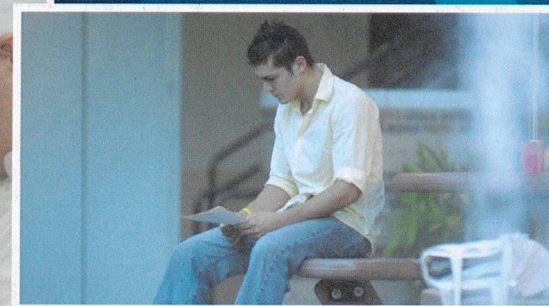


# STUDENT ACTIVITIES GUIDE AND PLANNER FALL 2006





WELCOME TO STUDENT ACTIVITIES

Student Activities Centers

Student Activities is your starting point for getting connected with student organizations, clubs, volunteerism, and recreational events. Student Activities also provides students with opportunities to develop leadership skills through the "Leadership 'n' Life" series and gain valuable experience in civic engagement through service learning, learning communities and volunteerism activities. Additionally, many of the programs cover topics and issues that may satisfy Communications



or Humanities assignments. Each of the centers features group study areas, comfortable furniture, meeting rooms, table tennis, billiards, information on area camping and state parks, television, table games, and bus schedules. They are also your starting point for getting involved on campus through student government, activities and events, clubs and organizations, recreation and intramurals! Do you have a talent? Opportunities exist in drama, Brain Bowl, intramural and recreational tournaments, mathematics, music, photography and student leadership, as well as a number of intercollegiate athletic teams. Contact any campus Student Activities office: Deerwood Center, Carol Gladstone, Room C-2328, (904) 997-2706; Downtown Campus, Clashous Witherspoon, Room C-101, (904) 633-8210; Kent Campus, Kelly Warren, Room G-149, (904) 381-3674; North Campus, Kerry Roth, Room E-235, (904) 766-6786; and South Campus, Walter Fitzpatrick, Room U-205, (904) 646-2272.



Student Government Association

Florida Community College's Student Government Association (SGA) is the official voice of the student body and the connection between students, faculty and College administration. Members sit on various Collegewide committees, such as the student appeals committee, the curriculum committee and campus presidents' governance councils. SGA members also have the opportunity to travel to district and state meetings, leadership retreats and conferences, gaining leadership development and life skills. Represented on each campus, SGA holds elections for vice president, senator and representatives during the fall term, and for president and an additional senator and representatives during the spring term. Tuition talent grants are available to each campus SGA president and vice president. Help make a difference on your campus! Contact any campus SGA listed below or Student Activities office for more information.

Deerwood Center, Jamie Evans, D-2420 (904) 997-2795  
Downtown Campus, TBA, Room C-101B, (904) 633-8272  
Kent Campus, Ashley Roberts, Room G-149, (904) 381-3617  
Nassau Center, Cedric Bacon, Room A-119, (904) 548-4481  
North Campus, TBA, Room E-227, (904) 766-6788  
South Campus, TBA, Room U-202, (904) 646-2284

Campus Student Volunteer Centers

Florida Community College students contribute a tremendous amount of time and effort to the Jacksonville community through the activities of the campus volunteer centers. The student volunteer center can connect you with the type of organization you would like to work with and keep track of your volunteer hours for you. Don't be left out! Get involved in making your community a better one today! Find out more by calling one of the student volunteer centers listed below. Interested in becoming a student volunteer coordinator? Tuition talent grants are available for eligible student volunteer coordinators. Contact your campus Student Activities office!

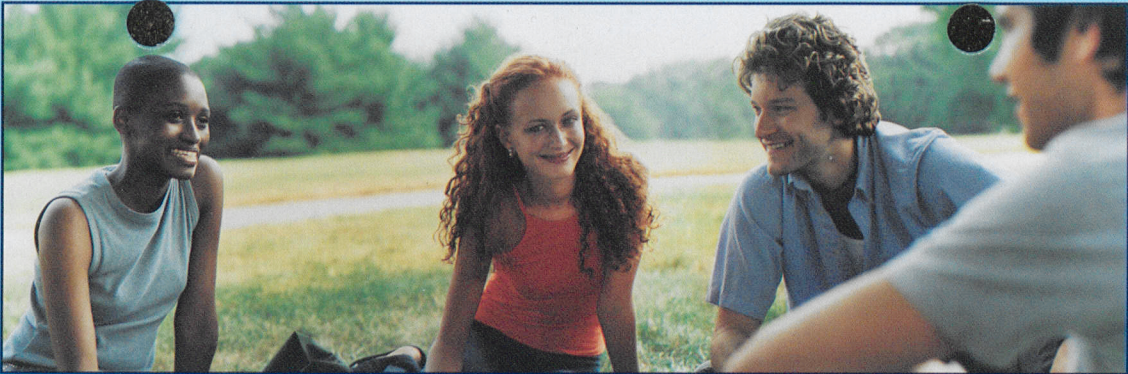
Deerwood Center, Room C-2328, (904) 997-2706  
Downtown Campus, Room C-101B, (904) 633-8277  
Kent Campus, Room G-149, (904) 381-3490  
North Campus, Room E-227, (904) 766-6772  
South Campus, Room U-223, (904) 646-2279

Contents

Artist Series .....	7	Campus Voice.....	9	Student Ambassadors.....	9
Athletics.....	9	Clubs and Organizations .....	2	Student Gov't Association.....	1
		Discount Tickets .....	back cover	Student Activities Centers.....	1
		Performing Groups.....	9	Student Volunteer Centers .....	1
		Phi Theta Kappa .....	9		

Clubs and Organizations

Get involved! Florida Community College is home to a variety of intercollegiate social, academic, service and occupational organizations. Each campus has its own special blend of clubs with several reaching all campuses. Check the list, contact the appropriate advisor and find out how you can get involved! Don't see an organization you may be interested in? Start your own! Chartering an organization can be as simple as obtaining a list of at least seven interested students and a faculty/staff advisor. Student Activities offers a "Starter Kit" to help you get your club up and running.



CLUB	ADVISOR	LOCATION	PHONE	CLUB	ADVISOR	LOCATION	PHONE
Adult Studies	Ed Watkins	DC/A-2079	(904) 633-3178	History Club	Dana Logan	KC/E-233	(904) 381-3582
Alpha-Omega Christian Club	Edith Rogers	KC/B-102	(904) 381-3610	Honors Academy	Rachelle Wadsworth	KC/B-236	(904) 381-3651
AMATYC	Debbie Millard	KC/A-239	(904) 381-3487		Suzanne Hess	KC/A-220	(904) 381-3714
Anime (Japanese Animation)	Julia Montgomery	SC/M-3108	(904) 646-2032		Lynn Lisenby	DC/A-3099	(904) 633-8269
Astronomy Club	Mike Reynolds	KC/E-235	(904) 381-3524		Nancy Bullard	NC/D263	(904) 766-6615
Bahai Club	Karen Schuster	KC/D-219	(904) 381-3677		David Bryes	SC/D-124	(904) 646-2038
Ballroom Dancing	Debbie Millard	KC/A-239	(904) 381-3487	Info. Tech. Professionals (AITP)	Gary Harr	SC/U-115	(904) 646-2424
Baptist Campus Ministries	Pam Helton	SC/M-2160	(904) 646-2031		Dick Chambliss	SC/F-233	(904) 646-2435
Bible Club	Gladys Sampson	DC/A-1093	(904) 633-8232		Stephanie Sipp	KC/E-100	(904) 381-3447
Brain Bowl	Cyrus Kitto	DC/A-2024	(904) 633-8147	Interior Design (ASID/IIDA)	Jennifer Rusnak	DC/A-2069	(904) 633-8155
CASS International	Luis Montalvo	DC/A-1093	(904) 633-8228	International Students Club	Arnold Khalafyan	DC/A-2167	(904) 633-8324
Campus of Choice Dancers	Rosalie Abraham	NC/D-262	(904) 766-6746	Kay Shway Shung (Chinese)	M. Kamiar	SC/N-212	(904) 646-2414
Campus Trends Fashion Club	Beverly Williamson	NC/E-151	(904) 766-6783		Art Chiang	KC/C-100	(904) 381-3670
Campus Voice (Newspaper)	Fred Hartmann	DC/C-109	(904) 361-6216		Robert Lilly	DWC/B-2201	(904) 997-2792
Chemistry Bio Tech	S. Milczanowski	SC/C-135	(904) 646-2074		Luz Font	SC/M-2238	(904) 646-2431
Chinese-American Exchange	Walter Fitzpatrick	SC/U-205	(904) 646-2272		Brian Thomasson	NC/A-277	(904) 766-6755
CORE Outdoor Club	Paula Risko	DWC/C-2311	(904) 997-2615	Nurses' Christian Fellowship	Linda Hunter	NC/C-220	(904) 766-6546
Creating I.N.C.	Billy Thomas	KC/C-100	(904) 381-3449	Outdoor Leadership Adventure	Carolyn Woods	Nassau Ctr.	(904) 548-4490
Dental Hygiene (SADHA)	Jackie Mack	NC/A-314	(904) 766-6575	Peace	Stephanie Galloway	SC/M2242	(904) 646-2360
Dental Assisting	Glenda Miller	NC/A-314	(904) 766-6579	Physical Therapy Assistants	Josh Coram	NC/A-101	(904) 766-6599
English Honor Society	Marian Beaman	SC/T-241	(904) 646-2322	Phi Theta Kappa	Mary James	KC E-249	(904) 381-3420
Excalibur	Marlene Suarez	SC/M-2147	(904) 646-2392	Ping Pong Club	Walter Fitzpatrick	SC/U-205	(904) 646-2272
Fencing	Jenny Ohayon	KC/B-244	(904) 381-3691	Pre-Med Club	P. Dement-Liebenow	SC/D-123	(904) 646-2090
Film Club	Bryan Spohn	KC/E-239	(904) 381-3439	Respiratory Care	Jim Woods	NC/A-235	(904) 766-6516
	Michael Haddock	KC/A-220	(904) 381-3644	Soccer	Jackie Felder	SC/U-205	(904) 646-2274
	Arnold Wood	SC/T-265	(904) 646-2341	Society of Physics (Student)	Chew-Lean Lee	KC/E-235	(904) 381-3404
Fishing Club	Jerry Shawver	DWC/C-2320	(904) 997-2709	Spanish Club	Laurie Thakkar	NC/D-265	(904) 766-6740
Florida Student Nurses	Barb Barbin	NC/C-233	(904) 766-6541	STEM Club	Lee Seltzer	KC/A-235	(904) 381-3521
Forensics (Speech/Debate)	Charles Smires	SC/M-2175	(904) 646-2438	Starz Pep Squad	Dr. Patty Adeeb	DWC/C-2350	(904) 997-2564
French	M. Tege-MacMillan	KC/A-201	(904) 381-3431	Student Art Guild	Stephen Heywood	SC/M-3101	(904) 646-2013
Friday Poets	C. Noelle	SC/M-2234	(904) 646-2319	Student Psychological Society	Troianne Grayson	SC/N-209	(904) 646-2411
	Amani Frances	DC/A-2023	(904) 633-8194	Students for a Free Tibet	Stephanie Galloway	SC/M-2242	(904) 646-2360
Future Builders of America	Michael D. Brock	DC/B-114	(904) 633-8186	Tang Soo Do Karate Club	Charles Phillips III	SC/ F-219	(904) 646-2059
Future Educators of America	Michael Orender	DC/B-114	(904) 633-8314	Video Game Club	Steven Gunter	NC/E-235	(904) 766-5550
	Shannon Groff	KC/B-250	(904) 381-3575	Women Pursuing Excellence	Lisa Reine	DC/A-1001F	(904) 633-8275
Gospel & Concert Chorale	Cedric Williams	DC/A-1711	(904) 361-6256	Writer's Club	Johnnie McCloud	DC/A-1118	(904) 633-8184
					Wendy Perniciaro	DWC/C-2300	(904) 997-2736



Amanda Garrigues

A Gainesville, Florida, native with two CDs under her belt and a slew of nationwide awards on the indie circuit, Amanda Garrigues is one of those rare artists who speaks to you in a voice that gives compassion and registers pain. Whether you are listening to Amanda from the comfort of your couch or from the back of a smoke-filled club, you know immediately that you are the recipient of a gift.

Aug. 29, 12:30pm, KC G-Stage and Sept. 6, Noon, SC Café.



Fusion

Jacksonville native Allana Southerland is gifted in the smooth sound of the saxophone. Her style of jazz and new-soul vibe with her group, Fusion, is synonymous with that of Kirk Whalum, Gerald Albright and Najee. Allana has performed nationwide and shared the stage with such legends as the Dizzy Gillespie All-Stars, Dave Brubeck, Paul Jackson Jr. and Pamela Williams. This one-of-a-kind artist graduated from the University of North Florida with a Bachelor of Music degree in Jazz Studies, as the only female saxophonist in UNF's Jazz Studies program. She hopes to encourage young people, especially young women, to follow their dreams even if it means getting into a male dominated field.

Aug. 29, Noon, SC Outside Café; Aug. 30, Noon, DC C-101; Sept. 6, 12:30pm, KC G-Stage; and Sept. 7, 11am, NC E-235

Brazz Tree

"...Quest..." is Brazz Tree's debut record—capturing the essence of the act's innovative sound and powerful live show. Inspired by traditional Eastern & Western compositions, the duo's musical vision is a fusing of guitarist Brad Hammonds' folk-inspired, percussive riff-based guitar lines coupled with traditional folk and fiddle tunes underneath Mazz's conscious lyrics which are sung with soulful originality. The eclectic duo's influences are apparent on their outside collaborations, as well. Since dropping out of Juilliard after three years, Mazz has collaborated with Dee Snider, Kanye West, Moby, Jay-Z, Perry Farrell, Vernon Reid and DJ Logic. In just a little over a year, Brazz Tree has built a strong New York fan base from their mesmerizing shows and etheric string sounds playing clubs throughout NYC. They are on the Relix magazine compilation CD for the April/May 2006 issue and have received radio play from across the country.

Sept. 11, Noon, DC Café; Sept. 12, 11am, NC E-235; Sept. 13, Noon, SC Café; and Sept. 14, 12:30pm, KC G-Stage.



AUG./SEPT. 2006



September is Constitution Awareness month.  
See your campus Student Learning Specialist for more information.  
DC — Downtown Campus | DWC — Deerwood Center | KC — Kent Campus  
NC — North Campus | SC — South Campus | L'n'L — Leadership 'n' Life

Sunday	Monday	Tuesday	Wednesday	Thursday	Friday	Saturday
	Welcome Back Week	KC: Amanda Garrigues, 12:30pm, G-Stage SC: Fusion, Noon, Outside Café	DC: Student Activities Open House Featuring Fusion, Noon, C-101 KC: Alpha-Omega Christian Club Open House, 11am, G-155	DC: Gospel Chorale Auditions, 4pm, A-1058		
	28	29	30	31	1	2
	Labor Day College Closed	KC: Gallery Opening, The Linda Fisher Collection, 6-8pm, E-112 NC: Salary Cap Fantasy Football Deadline, E-235; Heart Gallery Opening, 6pm D-301	DC: Gallery Opening, Noon/5pm, A-1046 KC: Ice Cream Social/ Student Convocation, 12:30-2pm, G-Stage SC: Amanda Garrigues, Noon, Café	DC: Sickle Cell Screening, 10am, Lobby NC: Game Room Opening with Fusion, 11am, E-235 SC: Club Day, 1pm, Café		
3	4	5	6	7	8	9
	DC: Brazz Tree, Noon, Café	KC: SGA Meeting and Club Council, 2pm, G-126 NC: Brazz Tree, 11am, E-235 SC: Socrates Café, 1pm, U-152	DC: Club Council, Noon, C-103 KC: Intro to Comp. Career Exploration, 11am, G-126 NC: Billiards T-ment, 12:30pm, E-235 SC: Brazz Tree, Noon, Café	KC: Brazz Tree, 12:30pm, G-Stage; Fitness Center Orientation, 2pm, G-128		DC: Sickle Cell Walkathon, 10am, Courtyard
10	11	12	13	14	15	16
	DC: Constitution Awareness Day, 10am, A-1068 DWC: Constitution Awareness Day, 10am-4pm, Center Court SC: LNL-True Colors, 10:30am, G-101	SGA Elections KC: Constitution Awareness Day, 11am-1pm, Courtyard; SGA Mtg, 2pm, G-126 SC: Constitution Day Celebration, 10am, Café	SGA Elections KC: Discover Your Internal Job Desc., 11am, G-126; Alpha-Omega Christian Club Open House, 11am, G-155 SC: Health Fair, 10am-1pm, Café	KC: Club Day and Game Room Open House/Billiards T-ment, 11am-1pm, Student Center	DC: Fitness Center Orientation, Noon, C-107 District IV SGA Meeting, Tallahassee Community College	
17	18	19	20	21	22	23
	KC: LNL-Finding Your Passion, 12:30pm, D-120	DC: Flag Football League Begins, 1pm KC: SGA Mtg, 2pm, G-126 NC: Madden T-ment, 11am, E-235 SC: Socrates Café, 1pm, U-152	DC: LNL-True Colors, Noon, C-103 NC: LNL-True Colors, 2pm, E-227 SC: Flag Football, 1pm; Multi-Cultural Movie Night, 6pm, N-103	KC: Martial Arts Appreciation, 2pm, G-126 SC: Board Game Blowout, 1pm, Café		
24	25	26	27	28	29	30





Ken Whitener:  
Leadership Series

One of the greatest discoveries about human nature is that we tend to become what we think about. Imagination rules the world and every great accomplishment begins with a great idea. What do you want? Do you want to do better in school? Make better grades? Become an outstanding student...an inspiration to others...a more powerful leader on campus? You can do all these things and so much more when you learn how to harness your imagination, focus your thoughts and capture the magic of believing.

Oct. 9, 11am, NC C-126; Oct. 10, 1pm, SC TBA; Oct. 11, 12:30pm, KC D-120; Nov. 7, 6pm, DWC; and Nov. 8, Noon, DC C-103.



Javier Mendoza

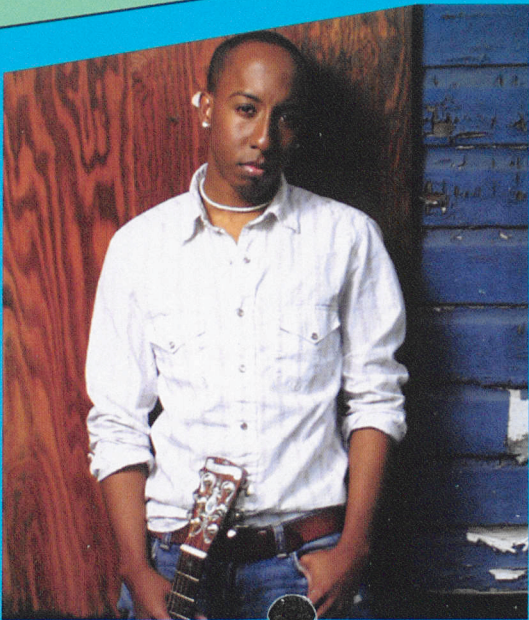
Singing in English and Spanish, Javier Mendoza blends his Spanish roots and his classic and modern rock influence to deliver a unique trans-national sound that will reach your soul and get you up and grooving. Javier has sold over 20,000 copies of his CDs independently and earned numerous musical accolades. He was voted Best World and Pop band in St. Louis 2000-04, a 2005 Budweiser True Music Artist and nominated for Best Male Vocals at the 2006 International Online Music Awards. Last year seven of his songs were featured on MTV's Real World. He has shared the stage with musicians Ben Folds, The Roots, Los Lobos, G-Love, Willie Nelson, and Blues Traveler as well as performing for Pope John Paul II in 1999.

Oct. 16, 11am, DC Café; Oct. 16, 1:30pm NC TBA; Oct. 17, 12:30pm KC G-Stage; Oct. 18, Noon, SC Café; and Oct. 18, 5:30pm DWC Center Court.

Michael Warren

Michael Warren's soulful, sincere songwriting and unique blend of rock, pop, R&B and country make him a must see. At 21 years old, Michael is young, but he packs the emotional punch of musicians twice his age. The Birmingham native has performed to sell-out crowds with artists such as Bow-Wow, Genuwine, Da-Band and 3LW. A gifted artist in every sense of the word—writer, singer and performer—Michael Warren's lyrics and music tell the stories of our lives.

Oct. 30, Noon, SC Café; Oct. 31, Noon, DC Café; Nov. 1, 12:30pm, KC G-Stage; and Nov. 2, 11am, NC Courtyard.



OCTOBER 2006



October is Violence Awareness month. See your campus Student Learning Specialist for more information.  
DC — Downtown Campus | DWC — Deerwood Center | KC — Kent Campus  
NC — North Campus | SC — South Campus | L'n'L — Leadership 'n' Life

Sunday	Monday	Tuesday	Wednesday	Thursday	Friday	Saturday
1	DC: Creative Writing with Lisa Teasley, 11am, A-1068	KC: SGA Mtg, 2pm, G-126; Gallery Opening, Jenny Chi, 6-8pm, E-112	DC: Gallery Opening, Noon, 5pm, A-1046 KC: Health Fair/Fall Fest, 10am-1pm, Courtyard NC: Mark Twain, 11am, Aud. SC: Volunteer Fair/Fall Fest, 11am-1pm, Outside Café	KC: Spades T-ment, 11am-2pm, Gameroom	KC: Collegewide SGA Leadership Retreat, 1:30-9pm, Student Center	7
8	NC: LNL-Ken Whitener, 11am, Aud.	KC: SGA Meeting and Club Council, 2pm, G-126 SC: LNL-Ken Whitener, 1pm, TBA	DC: Cholesterol and Diabetes Screening, 10am, A-Lobby KC: LNL-Ken Whitener, 12:30pm, D-120 SC: Nature Wellness Walk, 9am, Outside Café	KC: Fitness Center Orientation, 2pm, G-128	13	14
15	DC: Javier Mendoza, 11am, Café NC: Javier Mendoza, 1:30pm, Aud.	DC: Soccer League Begins, 1pm, C-103 for info KC: Javier Mendoza, 12:30pm, G-Stage; SGA Mtg, 2pm, G-126 SC: Socrates Café, 1pm, U-152	DC: LNL-Kitty Oliver, Noon, C-103 DWC: Javier Mendoza, 5:30pm, Center Court NC: Health Fair, 10am-1pm SC: Javier Mendoza, Noon, Café	KC: Table Tennis T-ment, 11am-2pm, Gameroom NC: Table Tennis T-ment, 12:30pm, E-235	20	21
22 District IV SGA Leadership Retreat, Camp Kulaqua	District IV SGA Leadership Retreat, Camp Kulaqua	KC: Marketing Yourself-Formula for Resume Success, 11am, E-112 SC: Board Game Blowout, 1pm, Café District IV SGA Leadership Retreat, Camp Kulaqua	KC: Medieval Fair, 9am-1pm, Courtyard	KC: Flamingo Writer Showcase, Noon-2pm, G-126 KC: Martial Arts Appreciation, 2pm, G-126	DC: Fitness Center Orientation, Noon C-107	28
29	SC: Michael Warren, Noon, Café, Multi-Cultural Movie Night, 6pm, N-103	DC: Michael Warren, Noon, Café KC: SGA Mtg, 2pm, G-126; Gallery Opening, Louise Freshman Brown, 6-8pm, E-112				



The Noel Freidline Quintet

Jacksonville locals made good, the Noel Freidline Quintet has developed a signature sound built upon the innovative writing and arranging of Noel Freidline and powered by masterful musicianship and an infectious enthusiasm for the music. Very fresh, very creative, and very exciting. The group has successfully embraced the challenge of art vs. entertainment, with one foot firmly planted in each camp, combining a high level of musicality with a strong sense of performance. "You won't find another band that swings as hard as the Noel Freidline Quintet. Their exuberant set flows through fresh interpretations of mainstream jazz standards, blues and pop tunes so effortlessly that audiences not only are left tapping their toes, but standing and cheering for more. That's one reason why this immensely talented ensemble has built up a following that returns night after night," says Vic DiGenti, ten-year executive producer of the Jacksonville Jazz Festival.



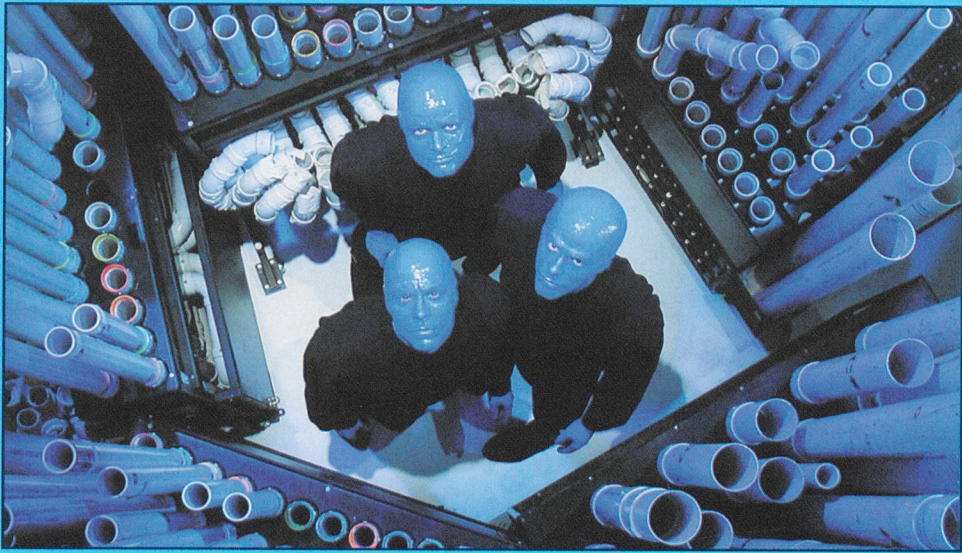
Nov. 27, 11am, NC Aud.; Nov. 28, 12:30pm, KC G-Stage; Nov. 29, Noon, DC Café; and Nov. 30, Noon, SC Outside Café.

Michael Jones Cello Duo

The Jones and Maruri cello guitar duo is one of the only established cello guitar duos in the world and enjoys an active concert and recording career. After joining forces in 1990 in Madrid, Michael Jones and Agustin Maruri have since played concerts in Europe, the Americas, the Caribbean and Australia. Their first US tour was in 1991 and included concerts in New York and St. Augustine, Florida. Since then they have performed each year in the USA, giving recitals in New York, Chicago, Houston, Washington DC, Los Angeles, and San Francisco at venues like the Lincoln Center and the Metropolitan Museum of Art and at festivals in the US, Cuba and Venezuela.



Nov. 15, 11am, KC E-104; Nov. 16, 11am, NC C-126; and Nov. 17, 1pm, SC TBA.



Artist Series

For over 40 years, the FCCJ Artist Series has been bringing dazzling Broadway shows and exciting theater to Jacksonville. This year's schedule promises the same. Last minute student and employee discount tickets are available for some shows with some discounts as much as 50 percent off the regular price. Tickets may be purchased at the following locations: Kent Campus Business Office, North Campus Student Activities Office, South Campus Wilson Center, and the Artist Series Office in the Martin Center, 501 W. State Street. Tickets can also be purchased by calling the Artist Series at (904) 632-3373 or toll free at (888) 860-2929. The website is [www.artistseries.fccj.org](http://www.artistseries.fccj.org). Mastercard, VISA, American Express, and Discover are accepted for your convenience, as well as cash and check. Take a look at part of this year's impressive lineup. Dates, times, stars and events are subject to change.

Sept. 13-TFN.....	Menopause, The Musical	Nov. 19 .....	Blue Man Group
Oct. 10 .....	An Evening with Garrison Keillor	Nov. 30 .....	Marie Osmond's Magic of Christmas
Oct. 12 .....	Dorothy the Dinosaur's Dance Party	Dec. 1 ...	Jesus Christ Superstar starring Ted Neely
Oct. 17-22.....	Joseph & The Amazing Technicolor Dreamcoat	Dec. 11 .....	George Carlin
Oct. 18 .....	The Glenn Miller Orchestra	Dec. 16-17 .....	Big Band Broadcast
Oct. 31-Nov. 5 .....	One Man Star Wars	Jan. 10 .....	State Ballet of Russia & Orchestra- One Thousand and One Nights!
Nov. 7 .....	Discover Theater-Disney's Cinderella & The Jungle Book	Jan. 11 .....	Howie Mandel
Nov. 8 .....	Mozart Festival Opera-Mozart's Don Giovanni	Jan. 12 ...	Bulgarian State Opera-Puccini's Turandot
Nov. 12 .....	Bo Diddley and Friends: Alvin Youngblood & Ruthie Foster	Jan. 17-18 .....	Golden Dragon Acrobats of China
Nov. 14-19 .....	The Rat Pack-Live from Las Vegas	Jan. 23-28 ..	Sweet Charity starring Molly Ringwald
		Jan. 30 ...	Teatro Lirico D'Europa-Verdi's Rigoletto
		Jan. 30-31 .....	Jackie Mason-Politically Incorrect

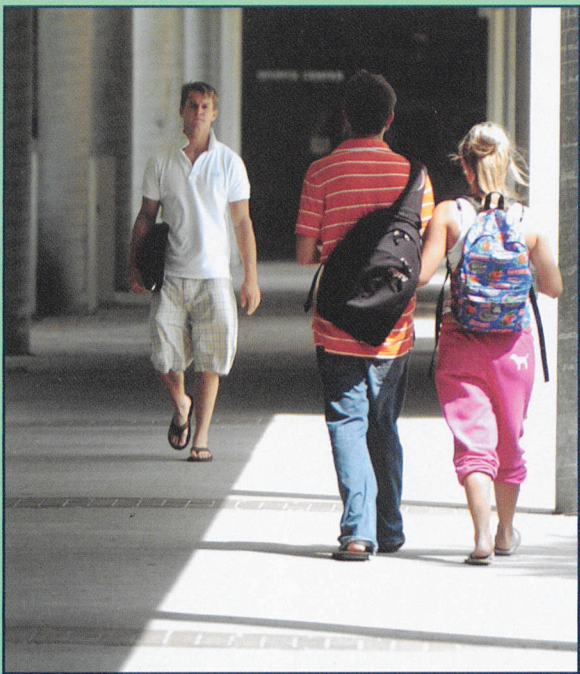
NOVEMBER 2006



November is International Culture month. See your campus Student Learning Specialist for more information.  
DC — Downtown Campus | DWC — Deerwood Center | KC — Kent Campus  
NC — North Campus | SC — South Campus | Ln'L — Leadership 'n' Life

Sunday	Monday	Tuesday	Wednesday	Thursday	Friday	Saturday
			DC: Health Fair, 10am-1pm; Gallery Opening, Noon/5pm, A-1046 KC: Michael Warren, 12:30pm, G-Stage SC: International Day, 11am-1pm, Café	KC: Hip Hop History Month Kickoff, Noon, G-Stage NC: Fall Fest with Michael Warren, 11am-2pm, Courtyard		
			1	2	3	4
	DC: International Coffee 'n' Poetry, 9:30am, A-Lobby KC: LNL-True Colors, 12:30pm, E-104; Talent Show Auditions, 3-6pm, F-128	DC: Talent Show Auditions, 3-6pm, A-1068 DWC: LNL-Ken Whitener, 6pm, TBA KC: Transfer Fair, 1-4pm NC: Transfer Fair, 8:30 11:30am	DC: LNL-Ken Whitener, Noon, C-103 DWC: Transfer Fair, 3-6pm NC: Talent Show Auditions, 3-6pm, C-126 SC: Transfer Fair, 8:30 11:30am	DC: Transfer Fair, 8:30-11:30am KC: Fitness Center Orientation, 2pm, G-128		
5	6	7	8	9	10	11
	KC: National Career Development Week Kickoff, 11am, G-121	DC: International Fashion Show, 10:15am, A-1068; Club Council, Noon, C-103 KC: SGA Meeting and Club Council, 2pm, G-126	DC: Chess Clinic and T-ment, Noon, C-101 DWC: Health Fair, 10am-1pm, Center Court KC: Michael Jones Cello Duo, 11am, E-104 NC: Chess, 12:30pm, E-235	KC: Hip Hop History Month, Noon, G-Stage NC: Michael Jones Cello Duo, 11am, Aud.	DC: Fitness Center Orientation, Noon C-107 SC: Michael Jones Cello Duo, 1pm, Wilson Ctr. FJCCSGA Presidents' Assembly, Location TBA	
12	13	14	15	16	17	18
		KC: Gallery Opening: Student Holiday Show, 6-8pm, E-112 SC: Board Game Blowout, 1pm, Café SC: Talent Show Auditions, 3-6pm, Wilson Ctr.	KC: Alpha-Omega Christian Club Open House, 11am, G-155 SC: Nature Wellness Walk, 9am, TBA	Thanksgiving Holiday College Closed	Thanksgiving Holiday College Closed	
19	20	21	22	23	24	25
	NC: Noel Freidline Quintet, 11am, C-126	KC: Noel Freidline Quintet, 12:30pm, G-Stage	DC: Noel Freidline Quintet, Noon, Café KC: Dressing for the Job, 11am, D-120	KC: Martial Arts Appreciation, 2pm, G-126 SC: Noel Freidline Quintet, Noon, Outside Café		
26	27	28	29	30		





### Campus Voice

The Campus Voice is Florida Community College's student newspaper...planned by students, written by students, edited by students and designed by students.

How can you get involved? Write us a letter. Want to air your opinion? Send a letter to the editor; maybe you'll see it printed on the editorial page. Want to be more involved than that? Volunteer to write an article, cover a game, take pictures, draw a cartoon, or design a page. No experience is needed because we'll help you over the rough spots. All it takes is a word from you. Or better yet, compete for a job. The jobs range from editor to office manager. For most of them you'll need either a journalism course or newspaper experience. The pay ranges from scholarships to weekly wages and its great experience!

Call the newsroom at 633-8283 or the adviser, Fred Hartmann, at 361-6216, or drop by TCV newsroom at Downtown Campus, Room C-109. Can't make it by? Write the Campus Voice at 101 W. State Street, Jacksonville, FL. 32202. Or see the newspaper online at [www.the-campus-voice.com](http://www.the-campus-voice.com) or e-mail [campusvoice@students.fccj.org](mailto:campusvoice@students.fccj.org).

### Athletics

Florida Community College's athletic program is recognized in the state and nation for its competitiveness and excellence. Teams are fielded in baseball, softball, basketball, volleyball and tennis. The program has produced more than 100 All-Americans, three national champions and numerous state and conference titles. Our teams are quite often found in the top 20 national rankings. Home basketball, tennis and volleyball matches are played at the South Campus gym, 11901 Beach Blvd. Home baseball and softball games are played at the North Campus Sports Complex, 4501 Capper Road. Come out and cheer on the Florida Community College Stars! For more information, contact the coaches listed below.

- Baseball**  
Chris Blacquiere, (904) 766-6752
- Basketball (Mens)**  
TBA, (904) 646-2217
- Basketball (Womens)**  
Debra Woods, (904) 646-2215
- Softball**  
Jami Lind, (904) 766-6795
- Tennis (Womens)**  
Mike Stroud, (904) 646-2214
- Volleyball (W)**  
Mary Andrew, (904) 646-2220



**Athletic Director**  
George Sanders, (904) 646-2203

### Performing Groups

Students with musical or dramatic talent might enjoy participating in one of Florida Community College's performing groups. The Chorale, Jazz Ensemble and Symphonic Band perform locally and throughout the Southeast, and the Jubilee Singers perform gospel music for area events. Students from any campus may participate in the many aspects of theatrical production as well. College-wide productions are full scale and allow participation for actors and stage hands in a community theater setting. Campus productions enable students to develop their talent through acting, directing, stagecraft and costuming. Contact the appropriate person below for your particular interest.

- Jazz Ensemble, Matt Vance, South Campus, (904) 646-2113
- Symphonic Band, Paul Weikle, South Campus, (904) 646-2010
- Chorale, Wayne Bailey, South Campus, (904) 646-2364
- Theatre, Ken McCullough, South Campus, (904) 646-2042
- Gospel and Concert Chorale, Cedric Williams, Downtown Campus, (904) 361-6256
- Dance Repertory Company, Rosemary Fletcher, South Campus, (904) 646-2361

### Student Ambassadors

Florida Community College Student Ambassadors assist the College in recruitment and retention activities. Working through the Student Activities offices at Downtown, Kent, North and South Campuses and through the Student Success offices at the Deerwood, Nassau and Martin Centers, they provide both new and returning students with the information they need to succeed. Ambassadors lead campus tours, are familiar with campus resources, contact first-time enrolled students, assist with orientation and registration, participate in campus activities/student government, and assist in College marketing activities, among other activities. Tuition talent grants are available. For more information about becoming a Student Ambassador, contact the Student Learning Specialist/ Student Ambassador advisor on your campus: Deerwood Center, Carol Gladstone, Room C-2328, (904) 997-2706; Downtown Campus, Jacinda Legons, Room A-2034, (904) 633-8475; Kent Campus, Kristy Synnott, Room G-149, (904) 381-3584; Nassau Center, Michael Pittius, Room A-101, (904) 548-4437; North Campus, Kerry Roth, Room E-235, (904) 766-6786; and South Campus, Kelly Horne, Room U-205, (904) 646-2272.

### Phi Theta Kappa

The international honor society for community colleges, Phi Theta Kappa can give you an edge far beyond your classes here at Florida Community College. Each year, PTK participates in a wide variety of academic, social and service activities, allowing you to gain experience outside of the classroom. To join PTK, you must have completed a minimum of 12 credit hours, maintain an overall GPA of at least 3.0, and have made a GPA of 3.25 or higher during at least one term. For more information, contact the Phi Theta Kappa office at (904) 381-3440, Kent Campus, Room G-150.

## DECEMBER 2006



December is Human Rights and Peace month. See your campus Student Learning Specialist for more information.  
DC — Downtown Campus | DWC — Deerwood Center | KC — Kent Campus  
NC — North Campus | SC — South Campus | L'n'L — Leadership 'n' Life

Sunday	Monday	Tuesday	Wednesday	Thursday	Friday	Saturday
					DC: World AIDS Day/ Screening, 10am, A-Lobby	
					1	2
		SC: Socrates Café, 1pm, U-152	KC: Jump Start Your New Year's Employment Search, 11am, G-126 SC: Nature Wellness Walk, 9am, TBA	DC: Gospel Chorale Concert, 6pm, A-1068		SC: Collegewide Talent and Variety Show, 7:30pm
3	4	5	6	7	8	9
			SC: The Big Chill, 10am, Café			
10	11	12	13	14	15	16
17	18	19	20	21	22	23
24						
31	25	26	27	28	29	30



# SUPER TICKET DISCOUNTS!

Dinner and a movie? Bowling with your buddies? Skating for the kids? A leisurely round of golf? We've got you covered! Florida Community College offers discount tickets to most area movie theaters and recreational facilities at reduced prices. Discount bus tickets from the JTA are also available. Tickets may be purchased at the following locations:

Kent Campus, Room B-102

(904) 381-3572

Monday-Thursday, 8 a.m.-6 p.m.

Friday, 8 a.m.-3 p.m.

North Campus, Room E-235

(904) 766-5550, E-235

Monday-Thursday, 8 a.m.-6 p.m.

Friday, 8 a.m.-3 p.m.

South Campus, Room U-207

(904) 646-2273

Monday-Thursday, 8 a.m.-6 p.m.

Friday, 8 a.m.-3 p.m.

Betty P. Cook Nassau County Center

76346 William Burgess Blvd., Yulee

(904) 548-4400

Monday-Thursday, 8 a.m.-6 p.m.

Friday, 8 a.m.-1 p.m.

Donald T. Martin Center for

College Services, Room 141

(904) 632-3394

Monday-Friday, 10 a.m.-5 p.m.

Deerwood Center, Room D-2412

(904) 997-2580

Monday-Thursday, 8 a.m.-6 p.m.

Friday, 8 a.m.-3 p.m.



## Movie Theatres — Save 28%

### AMC

### Student Cost

Regency Mall (24 screens).....	\$5.50
Orange Park (24 screens).....	\$5.50
Regal Cinemas	
Beach Blvd. (18 screens).....	\$5.50
Phillips Hwy. (20 screens).....	\$5.50
Carmike Cinemas	
Amelia Island (7 screens).....	\$5.50

## Bowling Lanes — Save 55-60%

Bowl America, Beach (One game and shoes).....	\$1.50
Bowl America, Mandarin (One game and shoes).....	\$1.50
Bowl America, Orange Park (One game and shoes).....	\$1.50
Jax Lanes, West (Two games and shoes).....	\$1.25
Archer Lanes (One game and shoes).....	\$1.00

## Golf Courses — Save 20-30%

Fernandina Beach Golf (18 holes, 1/2 cart fee).....	\$18
Hyde Park (18 holes, 1/2 cart fee).....	\$19
Mill Cove (18 holes, 1/2 cart fee, Monday-Friday only).....	\$20
Deerfield Lakes (18 holes, 1/2 cart fee).....	\$20

\*Additional charge payable on site for weekends and holidays.

## Family Entertainment

Skate World (Ice Skating Only - Behind Market Square).....	\$3
Six Flags over Georgia	
One Day.....	\$28
Two Day Dual Park.....	\$30
White Water Atlanta.....	\$23.50

\*Additional charge for weekends.

## JTA Bus Ticket Books

Book of 40 tickets.....	\$28
Book of 10 tickets.....	\$7

Prices and offerings subject to change. Quantity rights reserved.